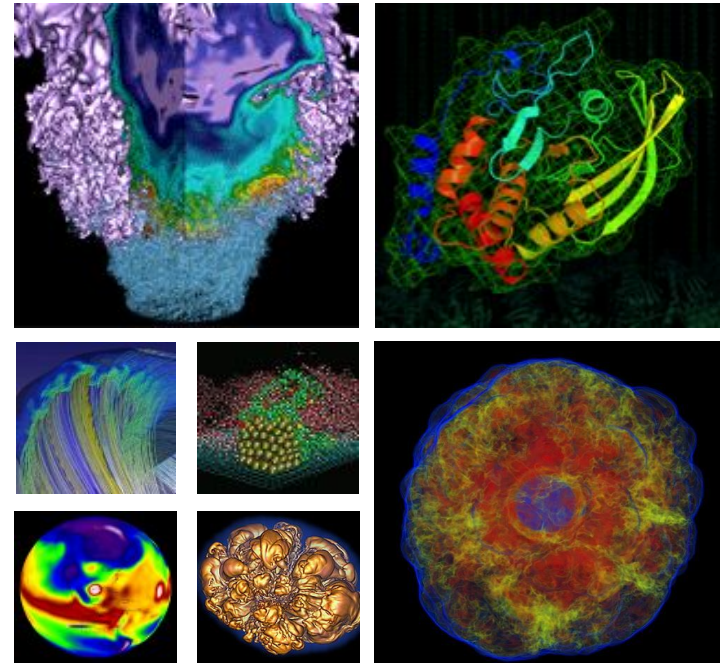


Introducing Iris: NERSC's New Account Management System

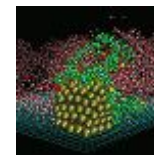
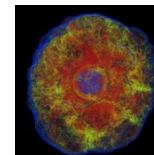
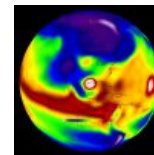
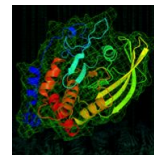
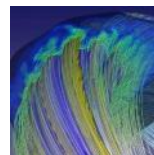
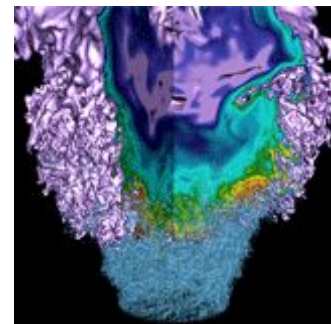


Cory Snavelly

Lead, NERSC Infrastructure Services Group
NUG 2019 Annual Meeting

- **Background / Overview**
 - **What is Iris?** (*Spoiler: it's the replacement for NIM.*)
 - **What differences will I notice?**
 - **A peek under the hood**
- **Demo**
- **What's next?**
 - **Implementation timeline**
 - **Help test and give feedback!**

Background / Overview



What is Iris?

The NERSC logo is located in the top right corner. It consists of the letters "NERSC" in a bold, white, sans-serif font, set against a dark blue background with a radial light effect emanating from behind the text.

It's the replacement for NIM and underlying systems.

- **For users:**
 - **Manage account details, password, tokens**
 - **Monitor compute and storage usage**
- **For Project PIs:**
 - **Manage projects, produce reports**
- **For DOE AMs, PMs:**
 - **View roll-ups by program/office**

What differences will I notice?



- **Designed in the current century! ;-)**
- **Easier to navigate, faster**
- **Responsive: works on phones, tablets**
- **Daily usage summary**
- **Job-level accounting**
- **Click to drill down on Projects, Users, Hours totals**
- **Click column headings to sort**

A peek under the hood (Accounting)

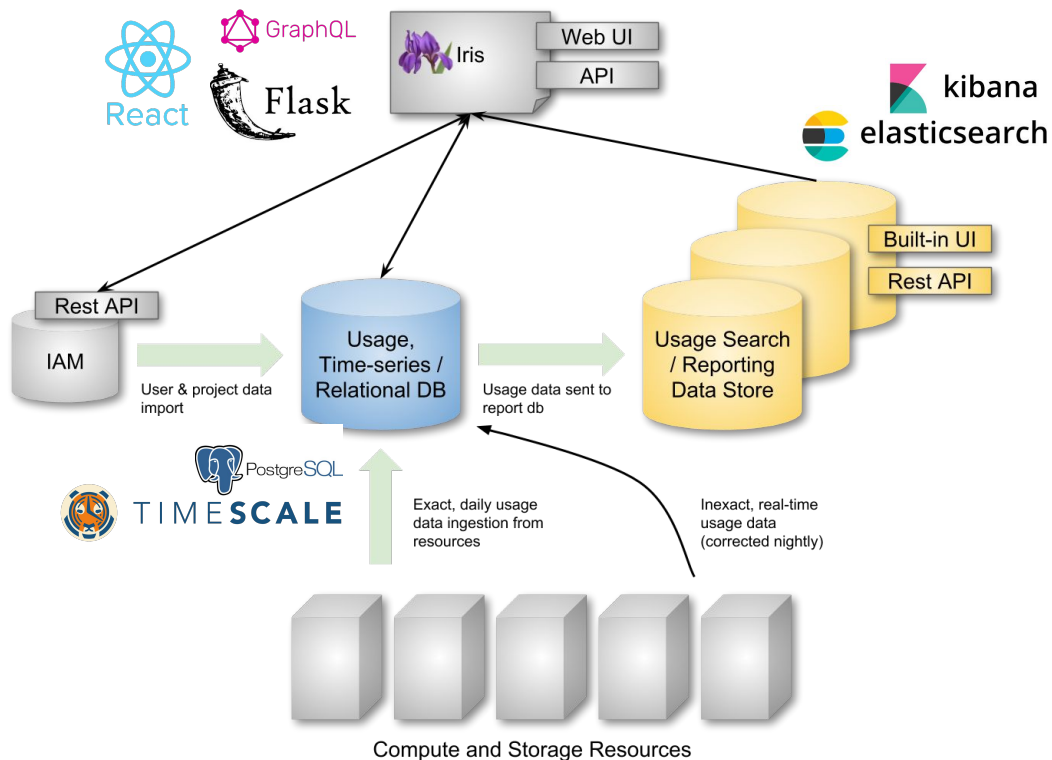


Modular design includes

- Modern UI, API Tools
- Time-series Database
- Elastic Backend
- Containerized deployment

System components are scalable and performant

Active user communities



A peek under the hood (IAM)

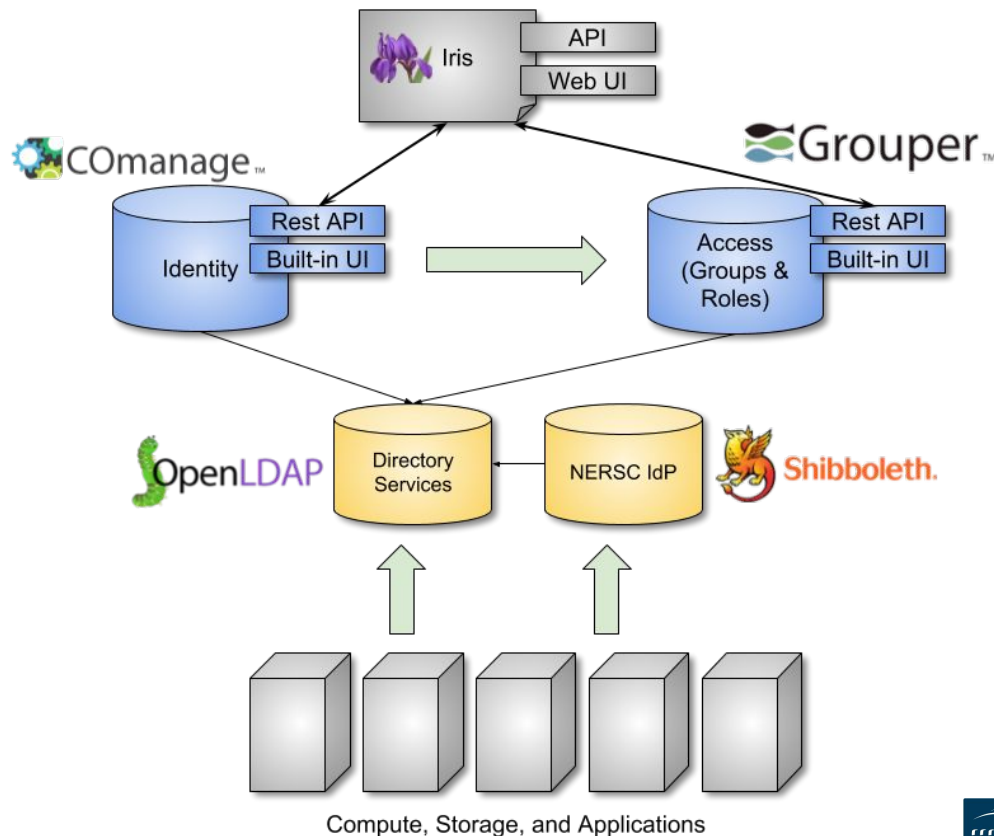


Based on InCommon
Trusted Access Platform

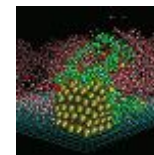
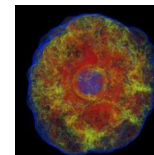
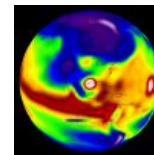
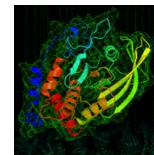
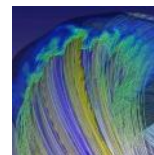
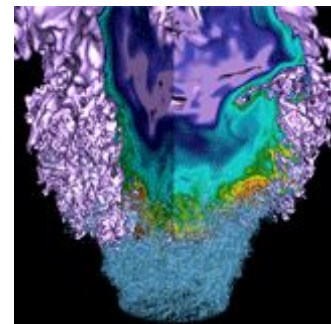
Designed for Academic and
Research Collaborations

Active user communities

Consulting and commercial
support options



Demo

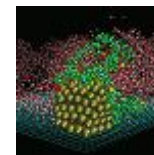
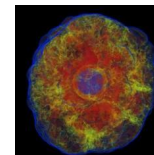
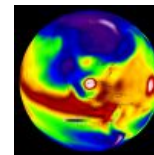
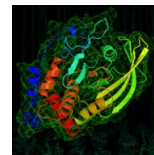
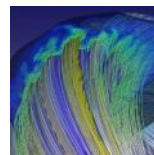
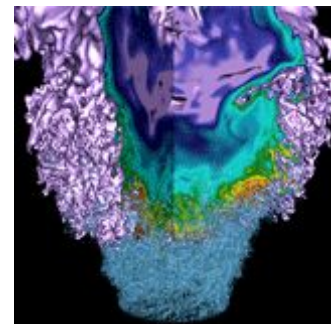


U.S. DEPARTMENT OF
ENERGY

Office of
Science



What's Next?



Implementation timeline



- ✓ **2018 Q3: Kick-off, Requirements gathering**
- ✓ **2018 Q4: Technology selection, Prototyping**
- ✓ **2019 Q1: Pilot System Development**
- ✓ **2019 Q2: Design Review with ALCF, OLCF, LIGO**
 - **2019 Q3: Feature completeness, Parallel operation**
 - **2019 Q4: Testing and cutover planning**
 - **2020 Q1: Launch**

Help test and give feedback!



Try it out at <http://iris.nersc.gov/>

- **Accounting data is live and accurate**
- **Read-only: changes are reset nightly**
- **Features and navigation are still in flux**

Volunteer for a focused feedback session!
To be scheduled in late summer or early fall