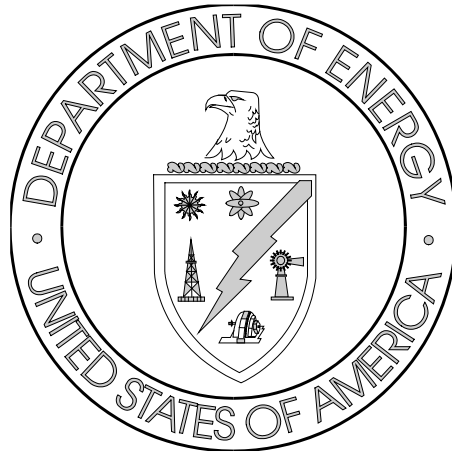


Section 7

Training Report for the Office of Assistant Manager for Environment, Safety, and Health (AMESH)





Section 7
**Training Report for the Office of Assistant Manager
 for Environment, Safety, and Health**

**AMESH Employee
 Training by Job
 Function: FY 2009**

ORO has categorized Federal employees into the following seven job functions:

- Supervisor
- Professional
- Facility Representative
- Administrative
- Technician
- Clerical
- Other

See Appendix B for a complete description of each of these job functions.

Figure 7.a Average Number of Training Hours by Job Function

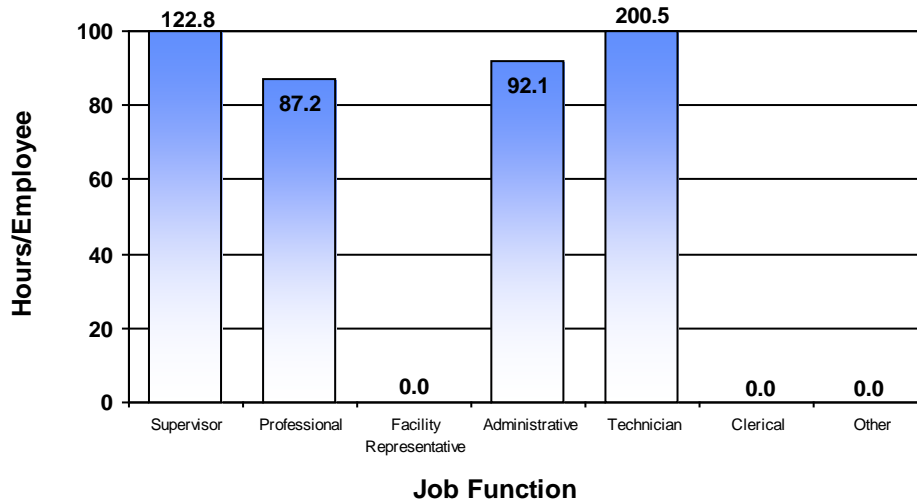


Table 7.a Total Number of AMESH Employees and Total Number of Training Hours

Job Function	Number of Employees		Number of Training Hours	
	FY 2008	FY 2009	FY 2008	FY 2009
Supervisor	5	5	140	614
Professional	31	31	1,561	2,704
Facility Representative	0	0	0	0
Administrative	7	7	180	645
Technician	2	2	239	401
Clerical	0	0	0	0
Other	0	0	0	0
Totals	45	45	2,120	4,364
Average Hours/Employee			47.1	97.0



Section 7

Training Report for the Office of Assistant Manager for Environment, Safety, and Health

AMESH Employee Training by Training Category: FY 2009

For management and reporting purposes, DOE has classified employee training into the following four major categories. See Appendix C for a complete description of each of these training categories.

- Compliance
- Development
- Directed by Management
- Job Related

The corresponding training hours for AMESH are depicted in Figure 7.b.

Figure 7.b AMESH Employee Training Hours by Training Category





Section 7

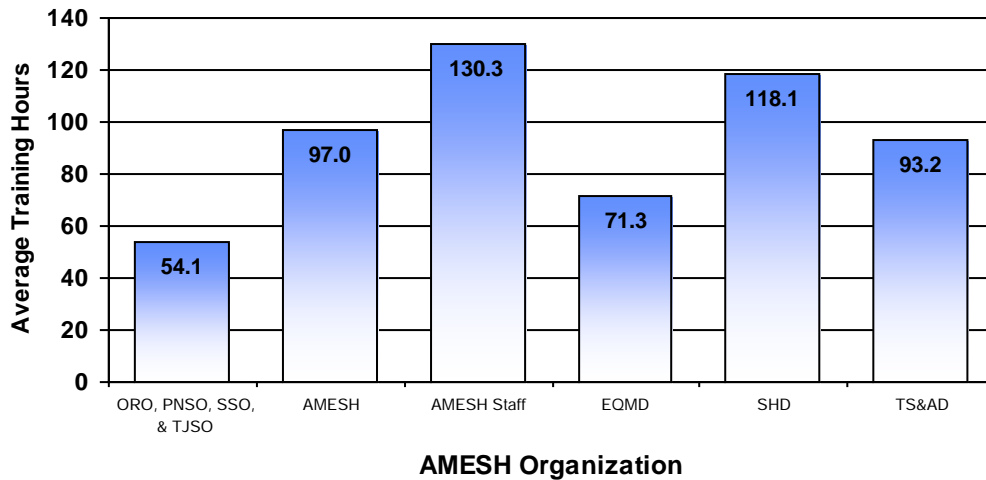
Training Report for the Office of Assistant Manager for Environment, Safety, and Health

Average Training Hours per Employee by AMESH Organization: FY 2009

The following organizations are represented in the figure below:

- Office of Assistant Manager for Environment, Safety, and Health (AMESH)
- Environmental and Quality Management Division (EQMD)
- Safety and Health Division (SHD)
- Technical Support and Assessment Division (TS&AD)

Figure 7.c Average Training Hours per Employee by AMESH Organization





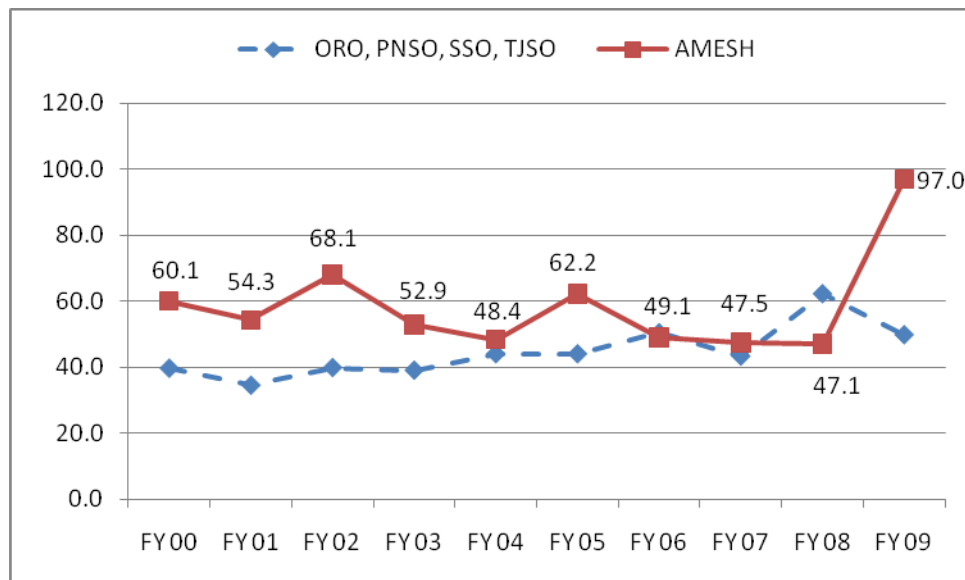
Section 7

Training Report for the Office of Assistant Manager for Environment, Safety, and Health

Average Training Hours per AMESH Employee: Trending

Figure 7.d depicts the average annual training hours per AMESH employee as compared to the combined ORO, PNSO, SSO, and TJSO annual average. Information available from the CHRIS database is shown, beginning with FY 2000.

Figure 7.d Average Annual Hours of Training per Employee



Fiscal Year



Section 7
***Training Report for the Office of Assistant Manager
 for Environment, Safety, and Health***

**Continuing and
 Advanced Education**

Continuing and advanced educational attendance is strongly encouraged and supported by DOE and ORO management. HCAG maintains a tracking database through CHRIS for attendance at courses provided by institutions of higher learning.

Table 7.b AMESH Employees Enrolled in Educational Institutions
 (College [two and four years], university, and technical training school)

	FY 2008	FY 2009
Total number of employees enrolled	1	2
Total number of courses attended	6	7
Total cost of education	\$2,670	\$6,441
Average cost per employee attending	\$2,670	\$3,221