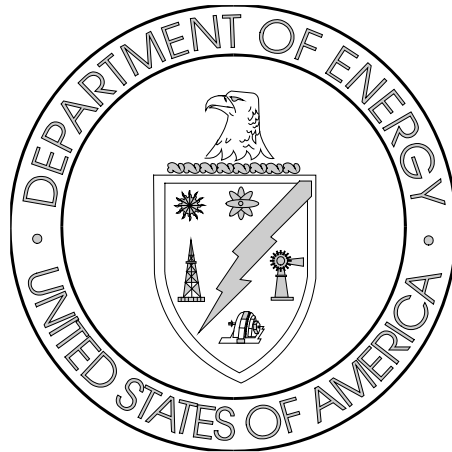


# **Section 6**

## **Training Report for the Office of Assistant Manager for Environmental Management (AMEM)**





**Section 6**  
**Training Report for the**  
**Office of Assistant Manager for Environmental Management**

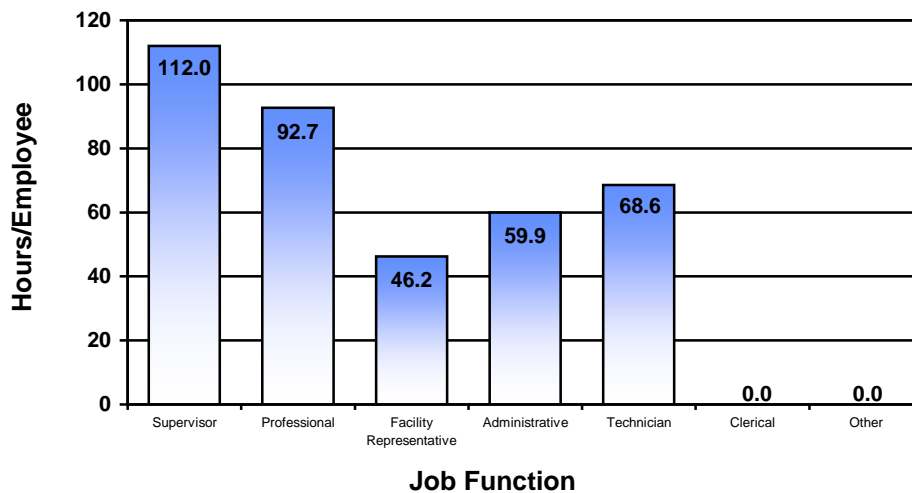
**AMEM Employee**  
**Training by Job**  
**Function: FY 2009**

ORO has categorized Federal employees into the following seven job functions:

- Supervisor
- Professional
- Facility Representative
- Administrative
- Technician
- Clerical
- Other

See Appendix B for a complete description of each of these job functions.

*Figure 6.a Average Number of Training Hours by Job Function*



*Table 6.a Total Number of AMEM Employees and Total Number of Training Hours*

Job Function	Number of Employees		Number of Training Hours	
	FY 2008	FY 2009	FY 2008	FY 2009
Supervisor	10	11	1,171	1,232
Professional	34	32	2,095	2,966
Facility Representative	18	18	1,082	831
Administrative	9	10	574	599
Technician	5	5	393	343
Clerical	0	0	0	0
Other	0	0	0	0
Totals	76	76	5,315	5,971
Average Hours/Employee			69.9	78.6



## Section 6

### *Training Report for the Office of Assistant Manager for Environmental Management*

---

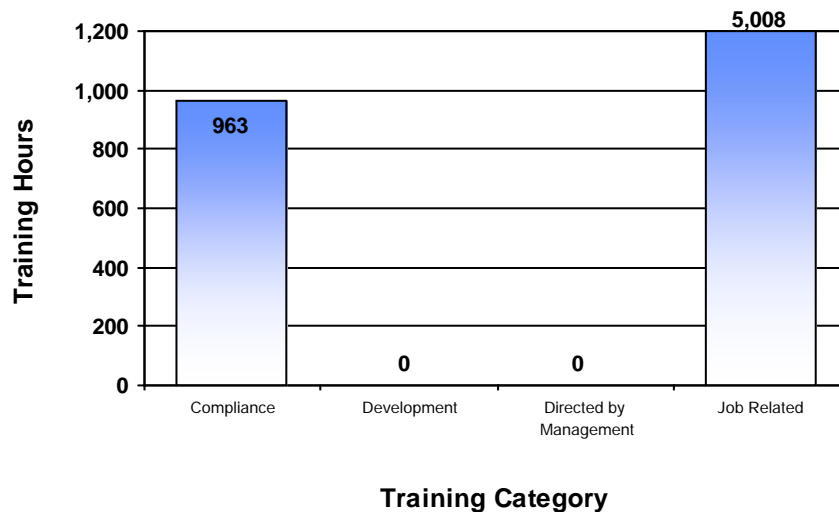
#### **AMEM Employee Training by Training Category: FY 2009**

For management and reporting purposes, DOE has classified employee training into the following four major categories. See Appendix C for a complete description of each of these training categories.

- Compliance
- Development
- Directed by Management
- Job Related

The corresponding training hours for AMEM are depicted in Figure 6.b.

*Figure 6.b AMEM Employee Training Hours by Training Category*





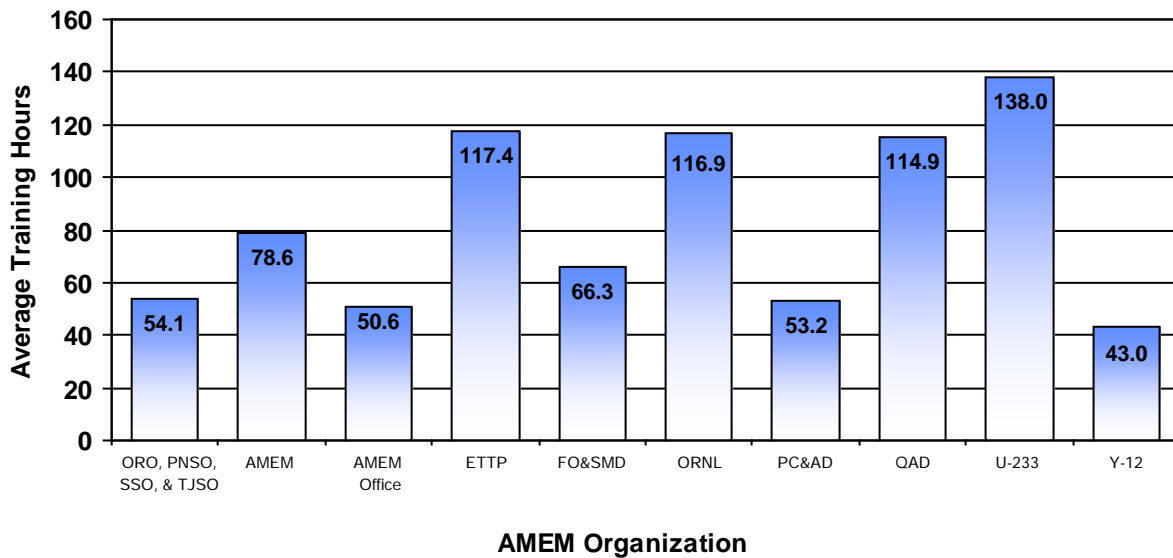
**Section 6**  
**Training Report for the**  
**Office of Assistant Manager for Environmental Management**

**Average Training Hours per Employee by AMEM Organization: FY 2009**

The following organizations are represented in the figure below:

- Office of AMEM
- East Tennessee Technology Park Project (ETTP)
- Facility Operations and Safety Management Division (FO&SMD)
- Oak Ridge National Laboratory Projects (ORNL)
- Project Controls and Administration Division (PC&AD)
- Quality Assurance Division (QAD)
- U-233 Project (U-233)
- Y-12 Projects (Y-12)

*Figure 6.c Average Training Hours per Employee by AMEM Organization*



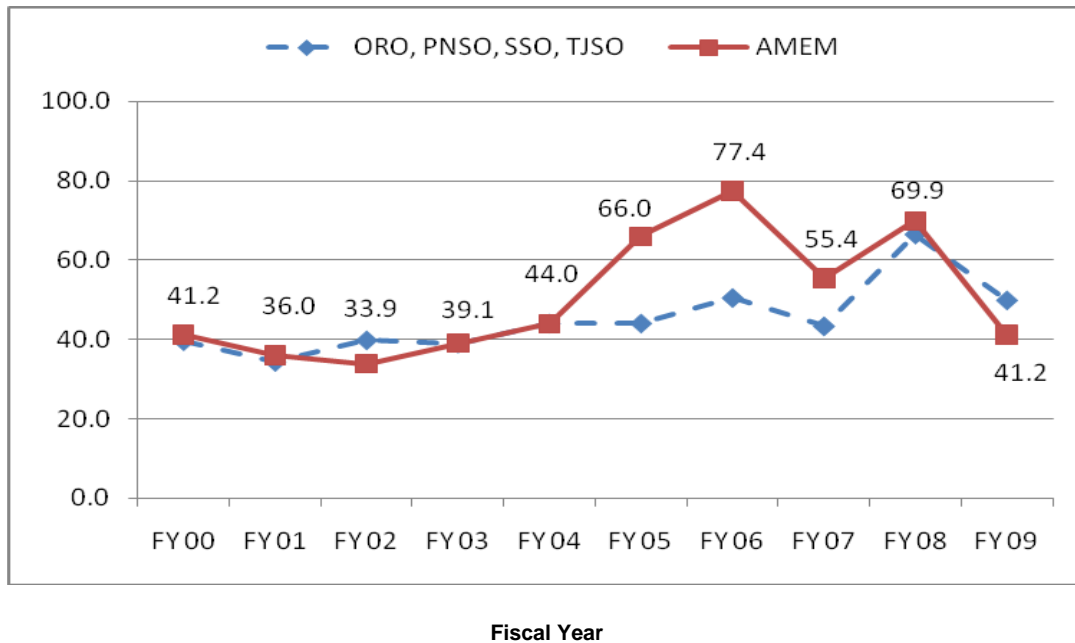


## Section 6 Training Report for the Office of Assistant Manager for Environmental Management

### Average Training Hours per AMEM Employee: Trending

Figure 6.d depicts the average annual training hours per AMEM employee as compared to the combined ORO, PNSO, SSO, and TJSO annual average. Information available from the CHRIS database is shown, beginning with FY 2000.

Figure 6.d Average Annual Hours of Training per Employee





**Section 6**  
**Training Report for the**  
**Office of Assistant Manager for Environmental Management**

---

**Continuing and Advanced Education**

Continuing and advanced educational attendance is strongly encouraged and supported by DOE and ORO management. HCAG maintains a tracking database through CHRIS for attendance at courses provided by institutions of higher learning.

**Table 6.b AMEM Employees Enrolled in Educational Institutions**  
 (College [two and four years], university, and technical training school)

	<b>FY 2008</b>	<b>FY 2009</b>
Total number of employees enrolled	7	7
Total number of courses attended	27	18
Total cost of education	\$41,232	\$18,302
Average cost per employee attending	\$5,890	\$2,615