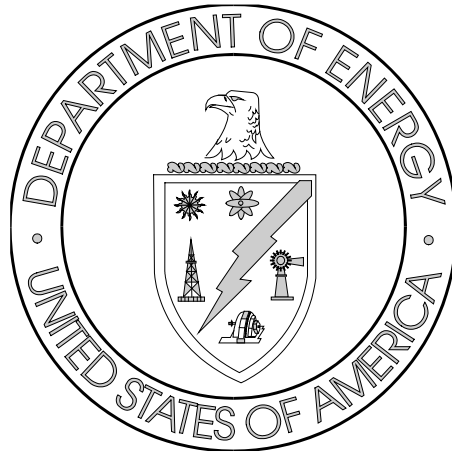


Section 13

Training Report for the Office of Partnerships and Program Development (OP&PD)





Section 13
Training Report for the Office of
Partnerships and Program Development

OP&PD Employee
Training by Job
Function: FY 2009

ORO has categorized Federal employees into the following seven job functions:

- Supervisor
- Professional
- Facility Representative
- Administrative
- Technician
- Clerical
- Other

See Appendix B for a complete description of each of these job functions.

Figure 13.a Average Number of Training Hours by Job Function

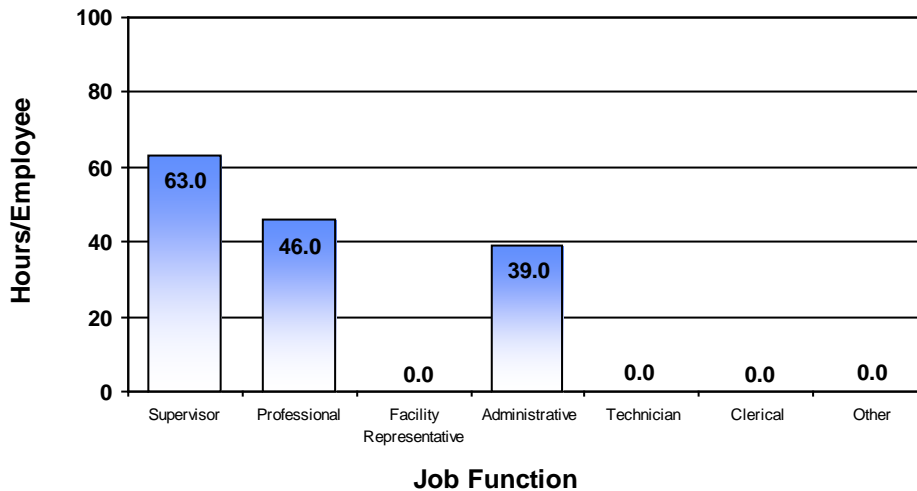


Table 13.a Total Number of OP&PD Employees and Total Number of Training Hours

Job Function	Number of Employees		Number of Training Hours	
	FY 2008	FY 2009	FY 2008	FY 2009
Supervisor	1	1	43	63
Professional	1	2	11	92
Facility Representative	0	0	0	0
Administrative	1	1	39	39
Technician	0	0	0	0
Clerical	0	0	0	0
Other	0	0	0	0
Totals	3	4	93	194
Average Hours/Employee			31.0	48.5



Section 13

Training Report for the Office of Partnerships and Program Development

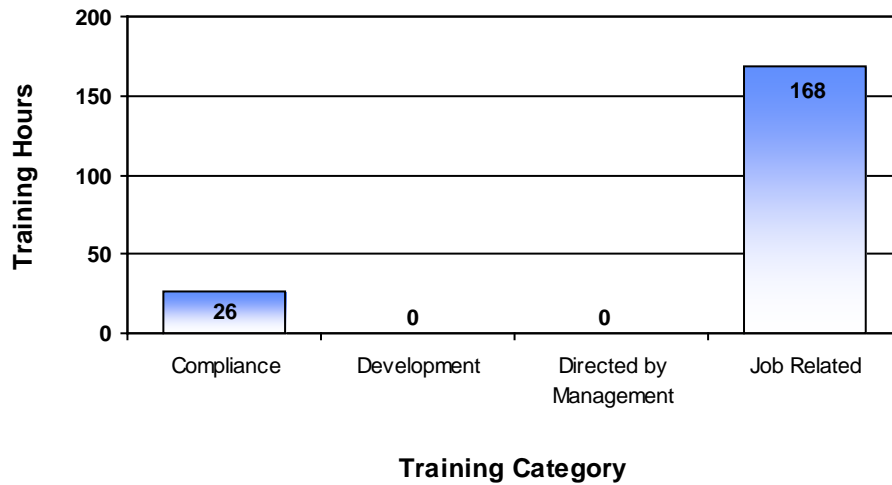
OP&PD Employee Training by Training Category: FY 2009

For management and reporting purposes, DOE has classified employee training into the following four major categories. See Appendix C for a complete description of each of these training categories.

- Compliance
- Development
- Directed by Management
- Job Related

The corresponding training hours for OP&PD are depicted in Figure 13.b.

Figure 13.b OP&PD Employee Training Hours by Training Category



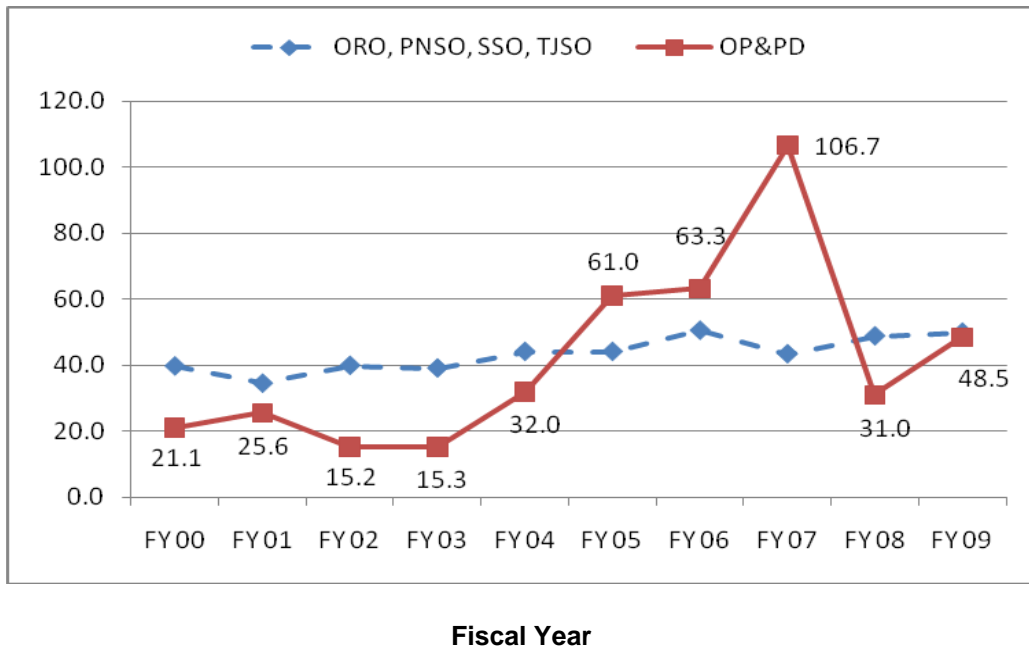


Section 13
Training Report for the Office of
Partnerships and Program Development

Average Training Hours per OP&PD Employee: Trending

Figure 13.c depicts the average annual training hours per OP&PD employee as compared to the combined ORO, PNSO, SSO, and TJSO annual average. Information available from the CHRIS database is shown, beginning with FY 2000.

*Figure 13.c Average Annual Hours of Training per Employee**



* Fiscal Year 1997 was the first full year of OP&PD's operation.



Section 13

Training Report for the Office of Partnerships and Program Development

Continuing and Advanced Education

Continuing and advanced educational attendance is strongly encouraged and supported by DOE and ORO management. HCAG maintains a tracking database through CHRIS for attendance at courses provided by institutions of higher learning.

Table 13.b OP&PD Employees Enrolled in Educational Institutions
(College [two and four years], university, and technical training school)

	FY 2008	FY 2009
Total number of employees enrolled	0	0
Total number of courses attended	0	0
Total cost of education	\$0	\$0
Average cost per employee attending	\$0	\$0