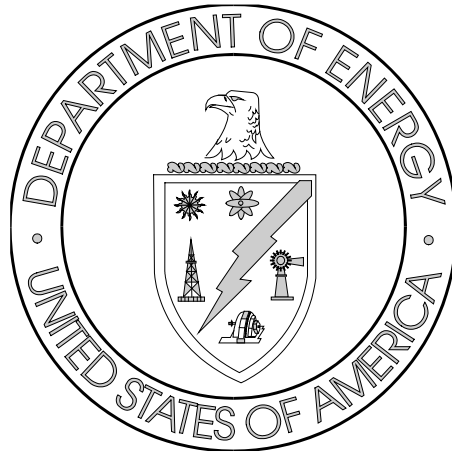


Section 12

Training Report for the Office of Chief Counsel (OCC)





Section 12

Training Report for the Office of Chief Counsel

OCC Employee Training by Job Function: FY 2009

ORO has categorized Federal employees into the following seven job functions:

- Supervisor
- Technician
- Professional
- Clerical
- Facility Representative
- Other
- Administrative

See Appendix B for a complete description of each of these job functions.

Figure 12.a Average Number of Training Hours by Job Function

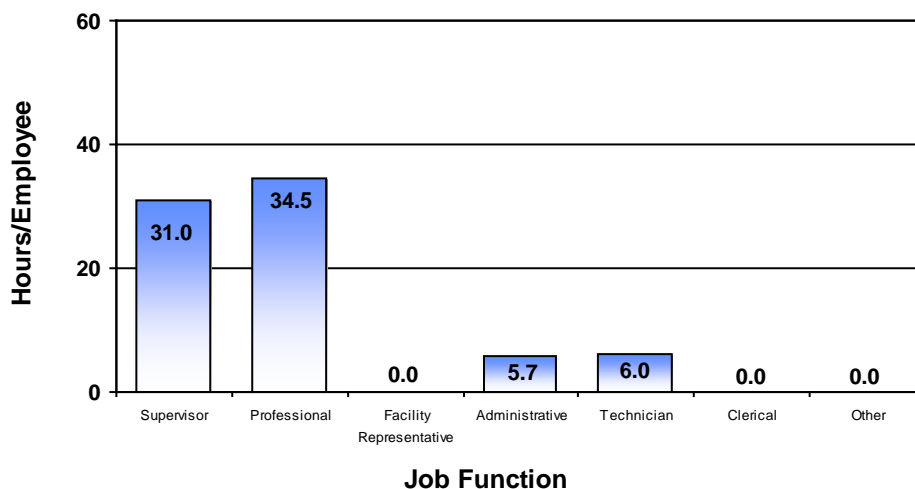
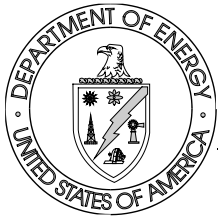


Table 12.a Total Number of OCC Employees and Total Number of Training Hours

Job Function	Number of Employees		Number of Training Hours	
	FY 2008	FY 2009	FY 2008	FY 2009
Supervisor	1	1	28	31
Professional	9	10	500	345
Facility Representative	0	0	0	0
Administrative	3	3	39	17
Technician	4	4	44	24
Clerical	0	0	0	0
Other	0	0	0	0
Totals	17	18	611	417
Average Hours/Employee			35.9	23.2



Section 12

Training Report for the Office of Chief Counsel

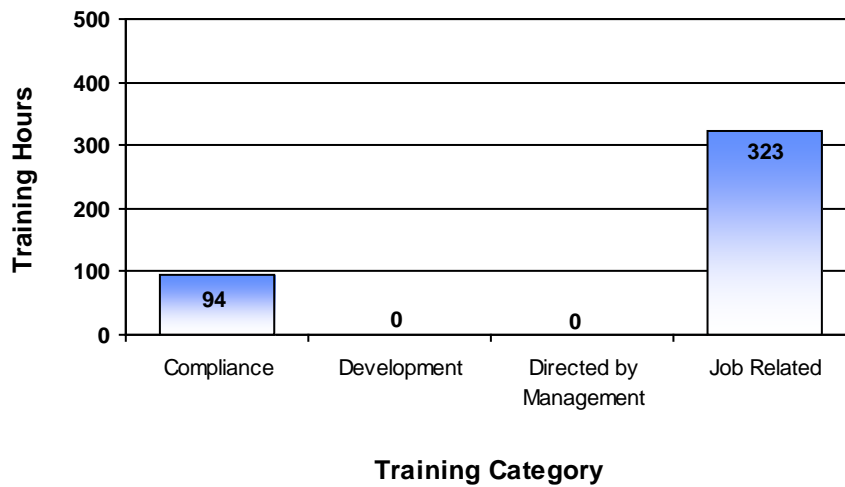
OCC Employee Training by Training Category: FY 2009

For management and reporting purposes, DOE has classified employee training into the following four major categories. See Appendix C for a complete description of each of these training categories.

- Compliance
- Development
- Directed by Management
- Job Related

The corresponding training hours for OCC are depicted in Figure 12.b.

Figure 12.b OCC Employee Training Hours by Training Category





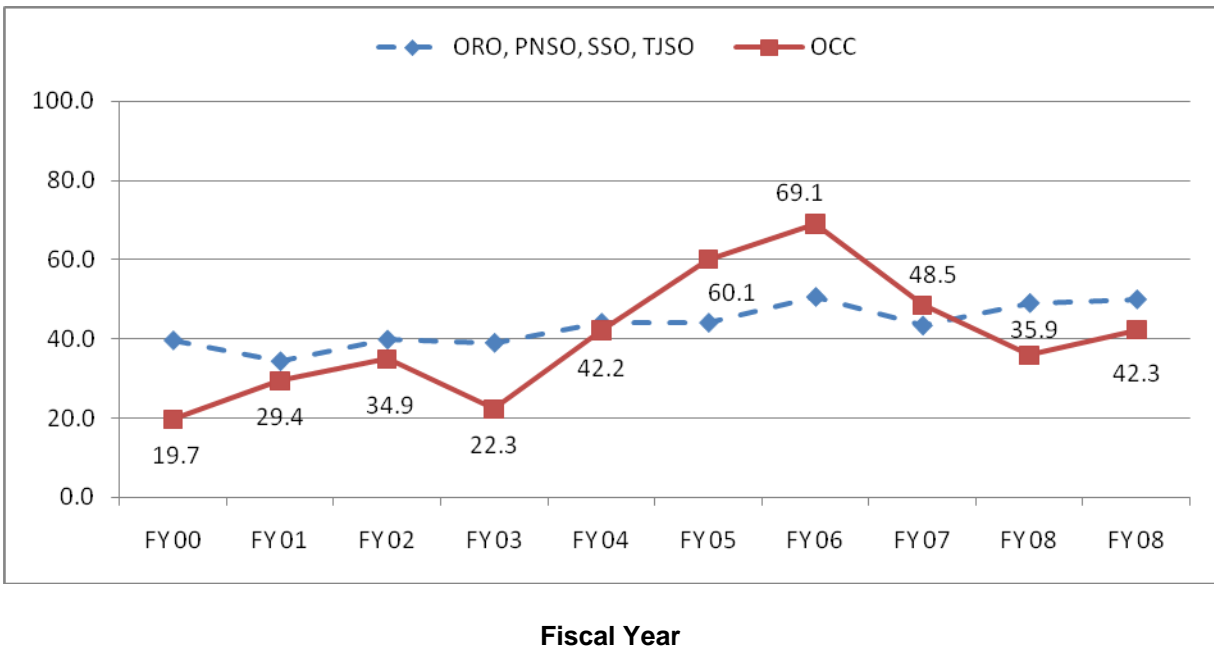
Section 12

Training Report for the Office of Chief Counsel

Average Training Hours per OCC Employee: Trending

Figure 12.c depicts the average annual training hours per OCC employee as compared to the combined ORO, PNSO, SSO, and TJSO annual average. Information available from the CHRIS database is shown, beginning with FY 2000.

Figure 12.c Average Annual Hours of Training per Employee





Section 12
Training Report for the Office of Chief Counsel

Continuing and Advanced Education

Continuing and advanced educational attendance is strongly encouraged and supported by DOE and ORO management. HCAG maintains a tracking database through CHRIS for attendance at courses provided by institutions of higher learning.

Table 12.b OCC Employees Enrolled in Educational Institutions
(College [two and four years], university, and technical training school)

	FY 2008	FY 2009
Total number of employees enrolled	0	0
Total number of courses attended	0	0
Total cost of education	\$0	\$0
Average cost per employee attending	\$0	\$0