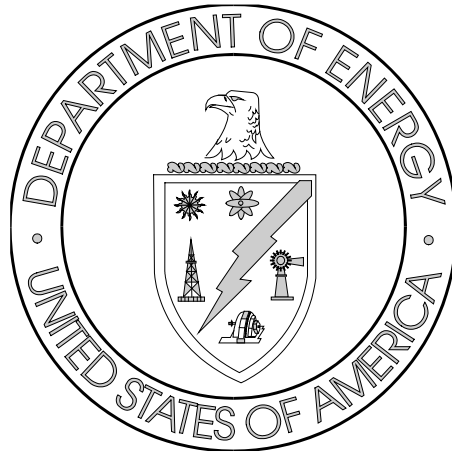


Section 10

Training Report for the Office of Assistant Manager for Science (AMS)





Section 10
Training Report for the
Office of Assistant Manager for Science

**AMS Employee Training
by Job Function:
FY 2009**

ORO has categorized Federal employees into the following seven job functions:

- Supervisor
- Professional
- Facility Representative
- Administrative
- Technician
- Clerical
- Other

See Appendix B for a complete description of each of these job functions.

Figure 10.a Average Number of Training Hours by Job Function

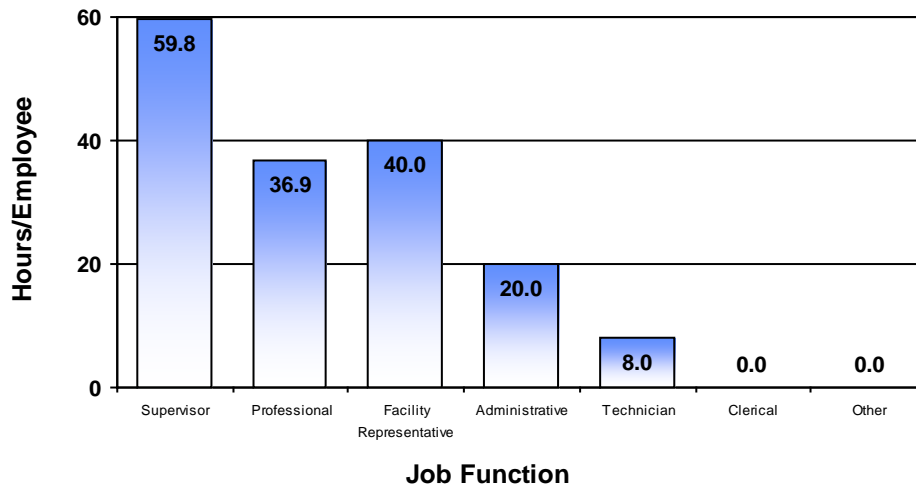


Table 10.a Total Number of AMS Employees and Total Number of Training Hours

Job Function	Number of Employees		Number of Training Hours	
	FY 2008	FY 2009	FY 2008	FY 2009
Supervisor	4	4	56	239
Professional	18	17	832	628
Facility Representative	5	5	186	200
Administrative	3	2	29	40
Technician	2	2	17	16
Clerical	0	0	0	0
Other	0	0	0	0
Totals	32	30	1,120	1,123
Average Hours/Employee			35.0	37.4



Section 10

Training Report for the Office of Assistant Manager for Science

AMS Employee Training by Training Category: FY 2009

For management and reporting purposes, DOE has classified employee training into the following four major categories. See Appendix C for a complete description of each of these training categories.

- Compliance
- Development
- Directed by Management
- Job Related

The corresponding training hours for AMS are depicted in Figure 10.b.

Figure 10.b AMS Employee Training Hours by Training Category





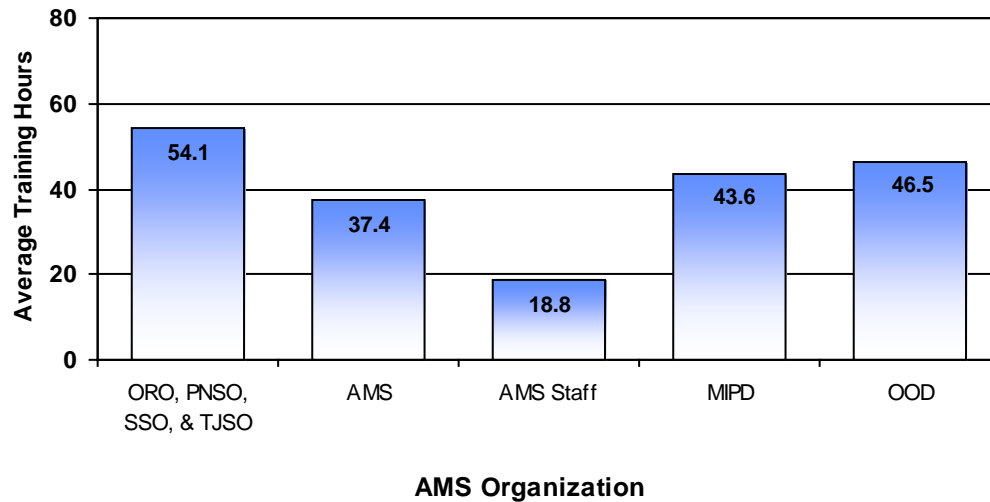
Section 10
Training Report for the
Office of Assistant Manager for Science

Average Training Hours
per Employee by AMS
Organization: FY 2009

The following organizations are represented in the figure below:

- Office of Assistant Manager for Science (AMS)
- Mission Integration and Projects Division (MIPD)
- Operations and Oversight Division (OOD)

Figure 10.c Average Training Hours per Employee by AMS Organization



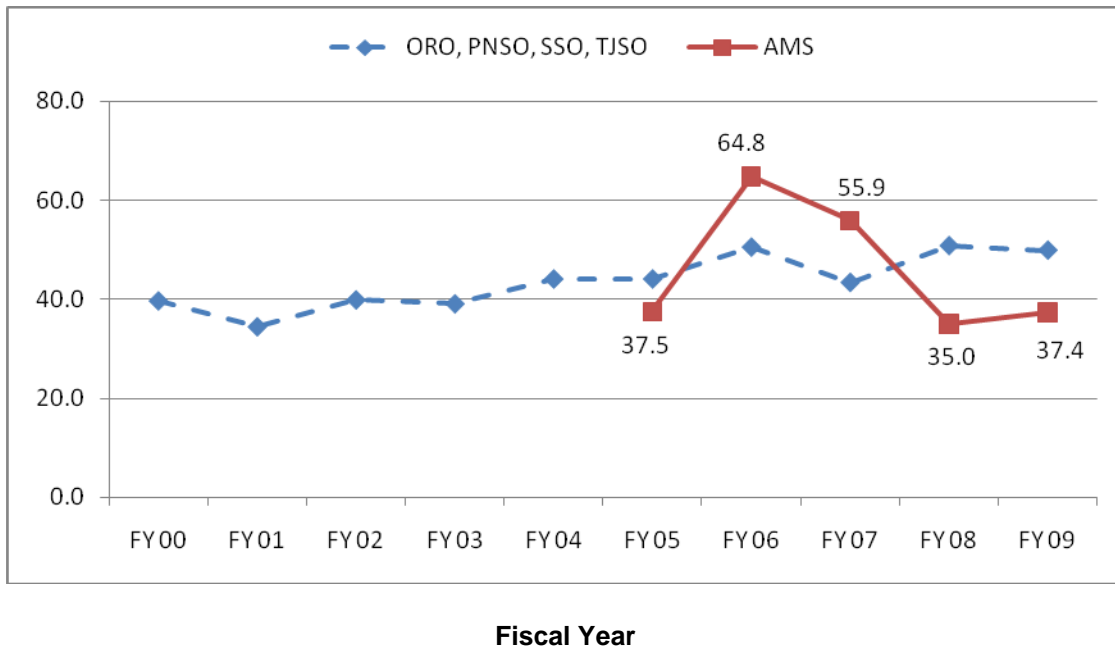


Section 10
Training Report for the
Office of Assistant Manager for Science

Average Training Hours
per AMS Employee:
Trending

Figure 10.d depicts the average annual training hours per AMS employee as compared to the combined ORO, PNSO, SSO, and TJSO annual average. Information available from the CHRIS database is shown, beginning with FY 2000.

Figure 10.d Average Annual Hours of Training per Employee





Section 10
Training Report for the
Office of Assistant Manager for Science

Continuing and Advanced Education

Continuing and advanced educational attendance is strongly encouraged and supported by DOE and ORO management. HCAG maintains a tracking database through CHRIS for attendance at courses provided by institutions of higher learning.

Table 10.b AMS Employees Enrolled in Educational Institutions
 (College [two and four years], university, and technical training school)

	FY 2008	FY 2009
Total number of employees enrolled	1	1
Total number of courses attended	2	2
Total cost of education	\$3,150	\$3,244
Average cost per employee attending	\$3,150	\$3,244