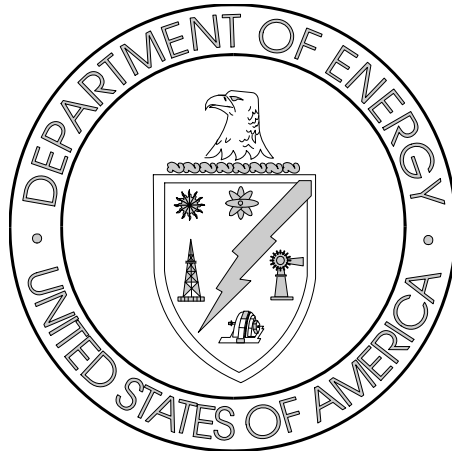


Section 6

Training Report for the Office of Assistant Manager for Environmental Management (AMEM)





Section 6
Training Report for the
Office of Assistant Manager for Environmental Management

AMEM Employee
Training by Job
Function: FY 2008

ORO has categorized Federal employees into the following seven job functions:

- Supervisor
- Professional
- Facility Representative
- Administrative
- Technician
- Clerical
- Other

See Appendix B for a complete description of each of these job functions.

Figure 6.a Average Number of Training Hours by Job Function

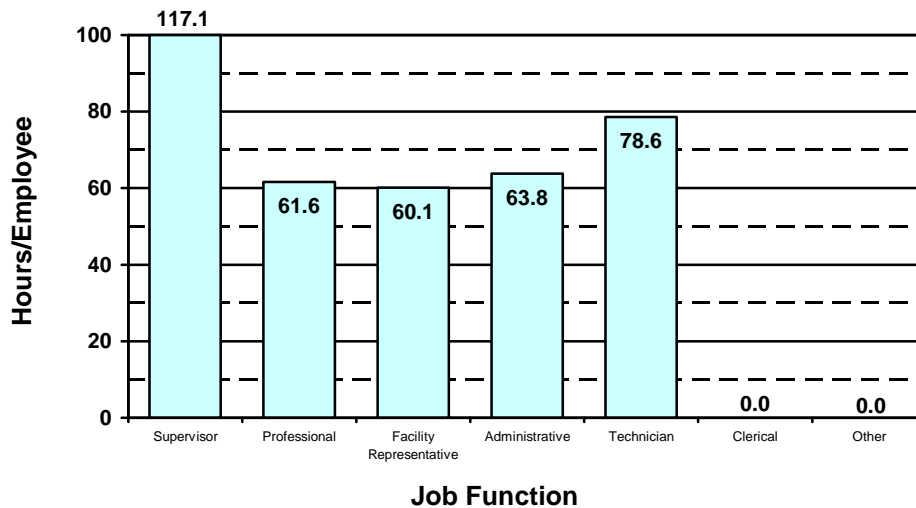


Table 6.a Total Number of AMEM Employees and Total Number of Training Hours

Job Function	Number of Employees		Number of Training Hours	
	FY 2007	FY 2008	FY 2007	FY 2008
Supervisor	7	10	355	1,171
Professional	37	34	2,517	2,095
Facility Representative	18	18	939	1,082
Administrative	8	9	260	574
Technician	5	5	83	393
Clerical	0	0	0	0
Other	0	0	0	0
Totals	75	76	4,154	5,315
Average Hours/Employee			55.4	69.9



Section 6
Training Report for the
Office of Assistant Manager for Environmental Management

**AMEM Employee
Training by Training
Category:
FY 2008**

For management and reporting purposes, DOE has classified employee training into the following four major categories. See Appendix C for a complete description of each of these training categories.

- Compliance
- Development
- Directed by Management
- Job Related

The corresponding training hours for AMEM are depicted in Figure 6.b.

Figure 6.b AMEM Employee Training Hours by Training Category





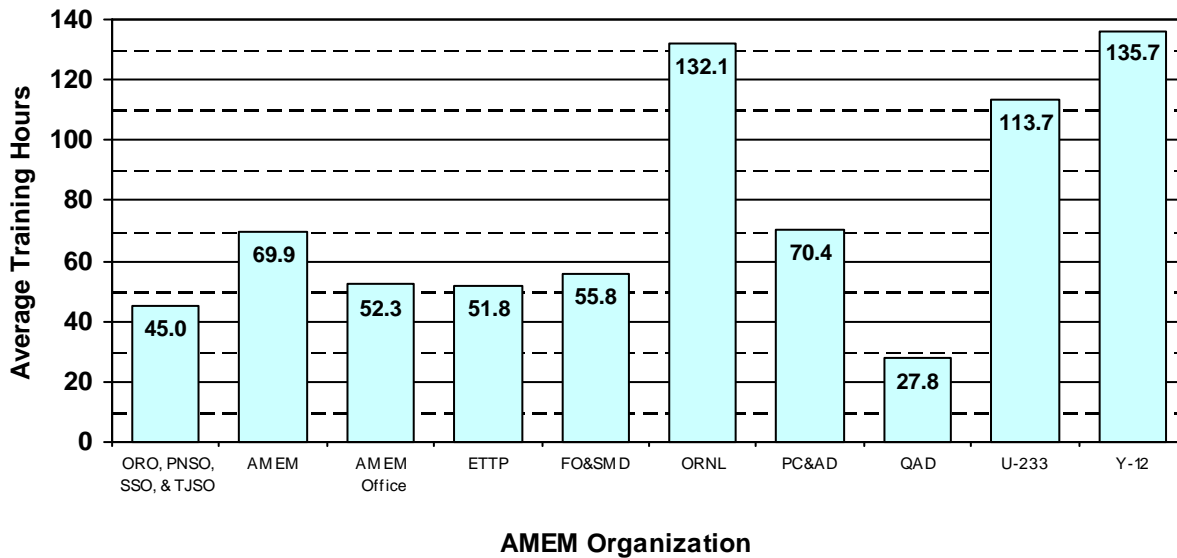
Section 6 Training Report for the Office of Assistant Manager for Environmental Management

Average Training Hours per Employee by AMEM Organization: FY 2008

The following organizations are represented in the figure below:

- Office of AMEM
- East Tennessee Technology Park Project (ETTP)
- Facility Operations and Safety Management Division (FO&SMD)
- Oak Ridge National Laboratory Projects (ORNL)
- Project Controls and Administration Division (PC&AD)
- Quality Assurance Division (QAD)
- U-233 Project (U-233)
- Y-12 Projects (Y-12)

Figure 6.c Average Training Hours per Employee by AMEM Organization



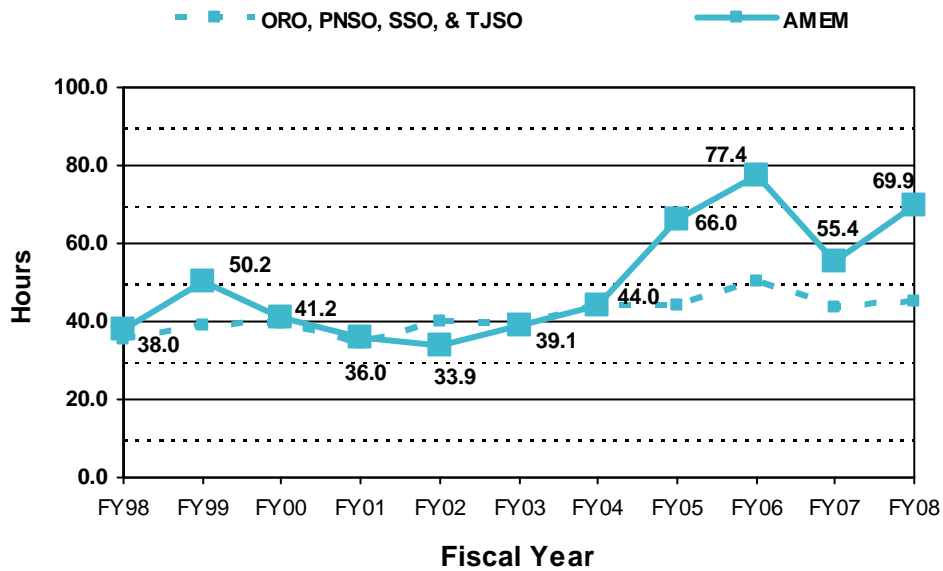


Section 6
Training Report for the
Office of Assistant Manager for Environmental Management

Average Training Hours per AMEM Employee: Trending

Figure 6.d depicts the average annual training hours per AMEM employee as compared to the combined ORO, PNSO, SSO, and TJSO annual average. Information available from the CHRIS database is shown, beginning with FY 1998.

Figure 6.d Average Annual Hours of Training per Employee





Section 6
Training Report for the
Office of Assistant Manager for Environmental Management

Continuing and Advanced Education

Continuing and advanced educational attendance is strongly encouraged and supported by DOE and ORO management. HCAG maintains a tracking database through CHRIS for attendance at courses provided by institutions of higher learning.

Table 6.b AMEM Employees Enrolled in Educational Institutions
 (College [two and four years], university, and technical training school)

	FY 2007	FY 2008
Total number of employees enrolled	6	7
Total number of courses attended	17	27
Total cost of education	\$27,521	\$41,232
Average cost per employee attending	\$4,587	\$5,890