

# Montana Perspective on Local/State EMS Implications



# Rural Nature





### Barriers:

- No data submission to State EMS
- State EMS no longer handles exam process or regulatory functions

### Opportunities:

- ✓ Develop web-based EMS data system
- ✓ Provide T.A. to locals in planning/systems development



# Training and Oversight

## Barriers:

- Lack funding to improve training using licensure fees
- No State EMS Medical Director

## Opportunities:

- ✓ EMS Section taking lead on future training
- ✓ Rx legislation to appoint State EMS Medical Director

# Evaluation of EMS

## Barriers:

- Overburdened volunteers
- Little evaluation at local/State level

## Opportunities:

- ✓ Analyze local EMS structure, response times
- ✓ QI using new data system

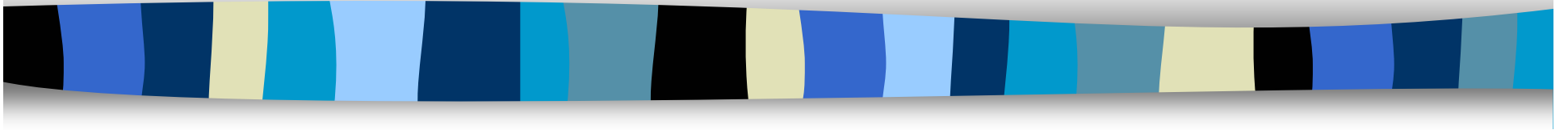


# Coordination

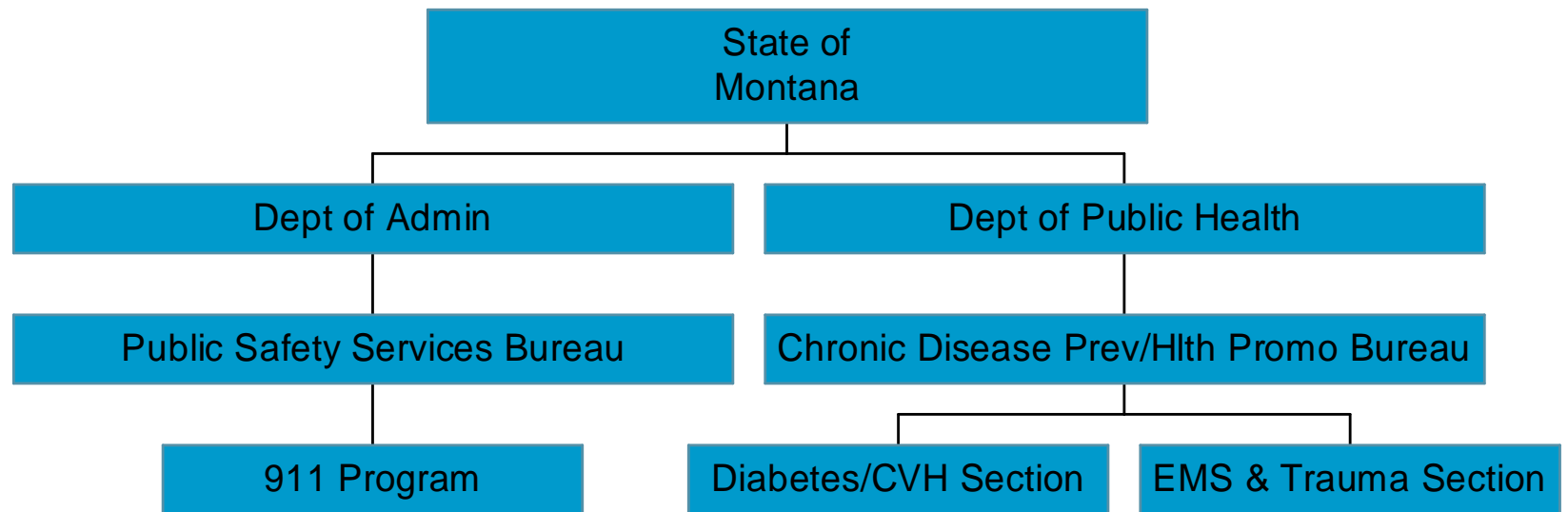


Standardization

# State 9-1-1 Coordination



# EMS vs 911 - State level



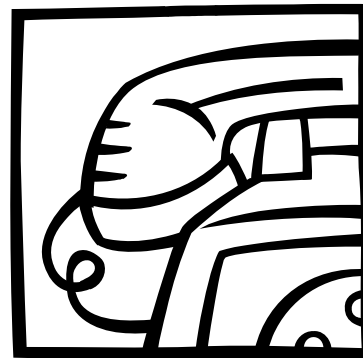
# State 9-1-1 Function/Authority

- State 9-1-1 Program
  - Single point of coordination
  - Statutory responsibilities for 9-1-1 implementation/operation



# 9-1-1 Coverage in Montana

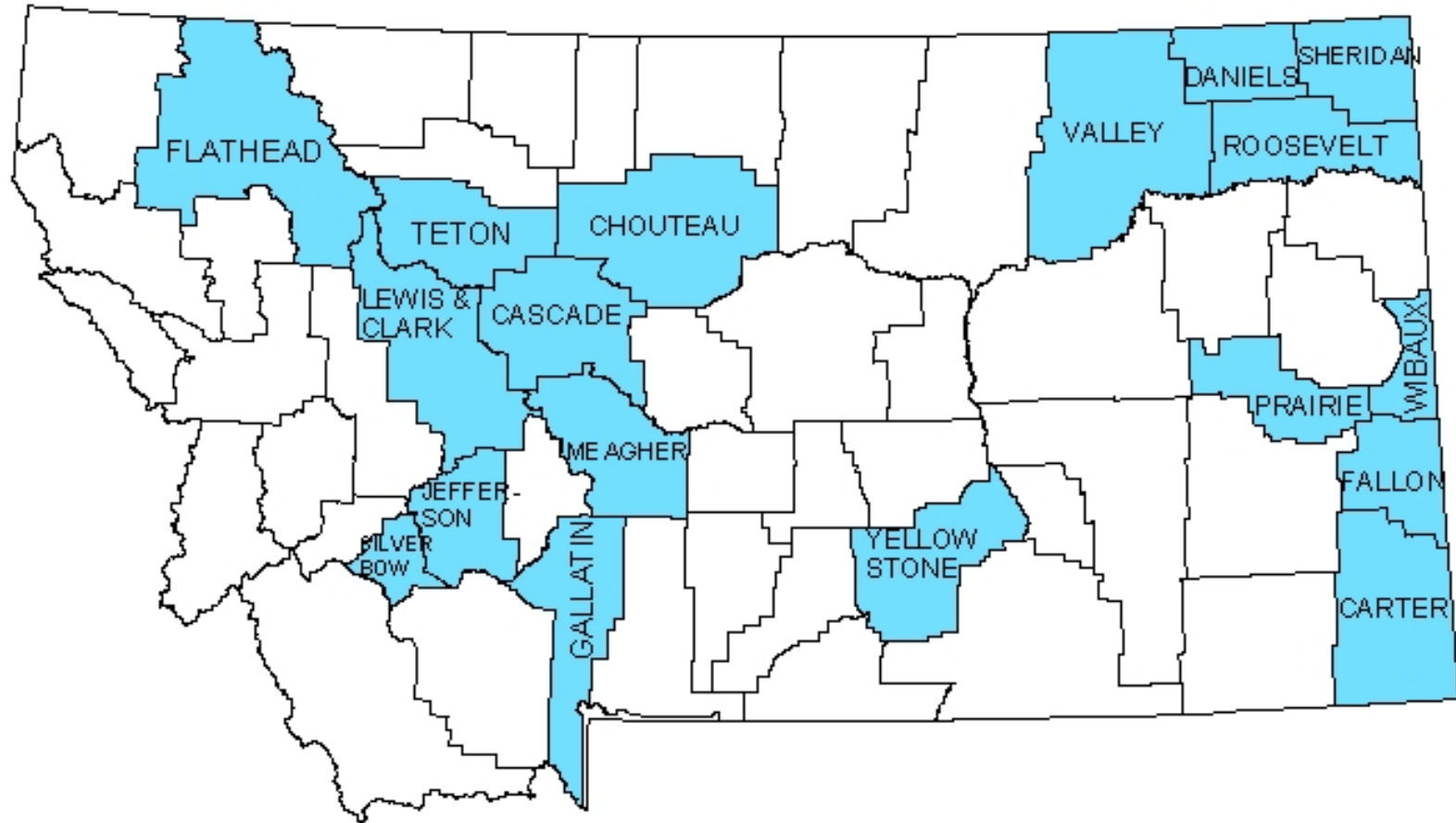
- Basic 9-1-1
  - all counties



- Enhanced 9-1-1
  - 23/58 Public Safety Answering Points
  - Covers over 60% of residents

- Minimal wireless E9-1-1

# Enhanced 911 Coverage





# Limited Montana EMS and 9-1-1 Coordination

- Statewide 9-1-1 Advisory Council
- EMS conference
- County 9-1-1 Board

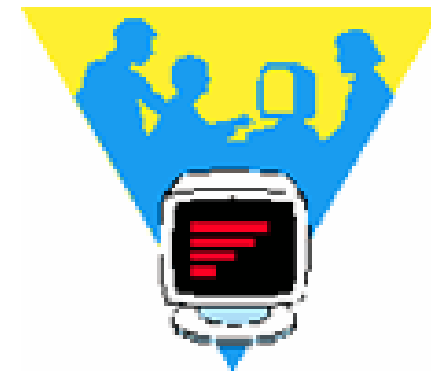
# 9-1-1 Issues

- Funding/Resources
- Emerging technologies
  - Challenge for rural communities



# Use of Local 9-1-1 Data

- Possible evaluation measure for stroke health communication project
- 9-1-1 software tracks usage of EMS stroke screening tool

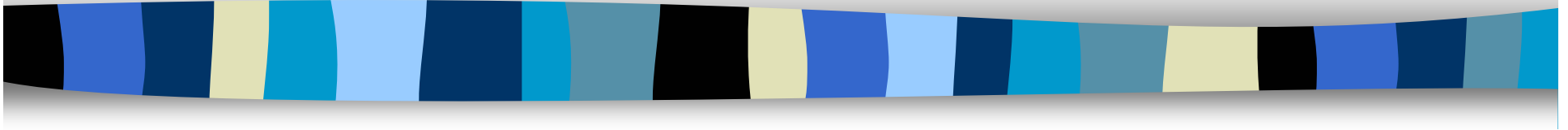




# State Plan Strategies

- EMD training/protocols for HDS 9-1-1 calls
- Promotion of Enhanced 9-1-1 coverage
- Call to action - media campaigns

# Local EMS Agencies



# Montana EMS Structure

- 350 EMS services
  - Half transporting capability
  - Larger towns – fire, private or both
- 5,000 EMTs
- First responder volunteers cover majority of Montana



# Montana EMS Challenges

- Recruitment/retention
  - Loss of paramedics and volunteers
  - Short EMT careers
- Training
  - Volunteers not reimbursed for course time/travel



# EMS Healthcare Issues

- Lack direction on stroke screening tool
- First responders' restrictions
- Most MT hospitals are Critical Access Hospitals





# CVH/EMS Collaborations

- Sponsor EMS conference speaker
- AED installation
- Statewide EMS survey
- Palm Pilots - EMS data system
- Stroke initiative
- Data analysis of local systems change

# Contact Info:



Crystelle Fogle  
Montana CVH Program  
cfogle@mt.gov  
(406) 947-2344